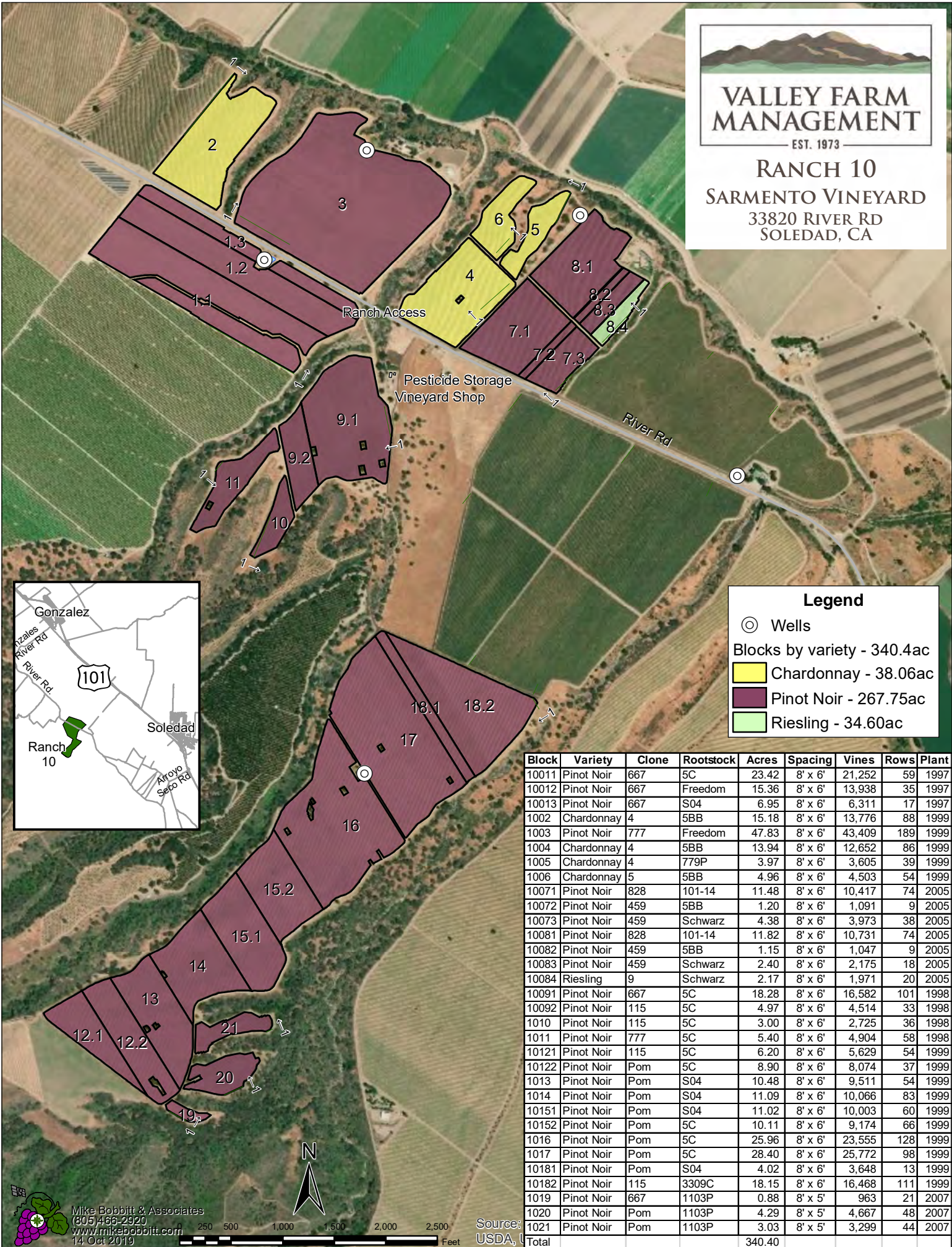




RANCH 10
SARMENTO VINEYARD
 33820 RIVER RD
 SOLEDAD, CA



Legend

- ⊙ Wells
- Blocks by variety - 340.4ac
 - Chardonnay - 38.06ac
 - Pinot Noir - 267.75ac
 - Riesling - 34.60ac

Block	Variety	Clone	Rootstock	Acres	Spacing	Vines	Rows	Plant
10011	Pinot Noir	667	5C	23.42	8' x 6'	21,252	59	1997
10012	Pinot Noir	667	Freedom	15.36	8' x 6'	13,938	35	1997
10013	Pinot Noir	667	S04	6.95	8' x 6'	6,311	17	1997
1002	Chardonnay	4	5BB	15.18	8' x 6'	13,776	88	1999
1003	Pinot Noir	777	Freedom	47.83	8' x 6'	43,409	189	1999
1004	Chardonnay	4	5BB	13.94	8' x 6'	12,652	86	1999
1005	Chardonnay	4	779P	3.97	8' x 6'	3,605	39	1999
1006	Chardonnay	5	5BB	4.96	8' x 6'	4,503	54	1999
10071	Pinot Noir	828	101-14	11.48	8' x 6'	10,417	74	2005
10072	Pinot Noir	459	5BB	1.20	8' x 6'	1,091	9	2005
10073	Pinot Noir	459	Schwarz	4.38	8' x 6'	3,973	38	2005
10081	Pinot Noir	828	101-14	11.82	8' x 6'	10,731	74	2005
10082	Pinot Noir	459	5BB	1.15	8' x 6'	1,047	9	2005
10083	Pinot Noir	459	Schwarz	2.40	8' x 6'	2,175	18	2005
10084	Riesling	9	Schwarz	2.17	8' x 6'	1,971	20	2005
10091	Pinot Noir	667	5C	18.28	8' x 6'	16,582	101	1998
10092	Pinot Noir	115	5C	4.97	8' x 6'	4,514	33	1998
1010	Pinot Noir	115	5C	3.00	8' x 6'	2,725	36	1998
1011	Pinot Noir	777	5C	5.40	8' x 6'	4,904	58	1998
10121	Pinot Noir	115	5C	6.20	8' x 6'	5,629	54	1999
10122	Pinot Noir	Pom	5C	8.90	8' x 6'	8,074	37	1999
1013	Pinot Noir	Pom	S04	10.48	8' x 6'	9,511	54	1999
1014	Pinot Noir	Pom	S04	11.09	8' x 6'	10,066	83	1999
10151	Pinot Noir	Pom	S04	11.02	8' x 6'	10,003	60	1999
10152	Pinot Noir	Pom	5C	10.11	8' x 6'	9,174	66	1999
1016	Pinot Noir	Pom	5C	25.96	8' x 6'	23,555	128	1999
1017	Pinot Noir	Pom	5C	28.40	8' x 6'	25,772	98	1999
10181	Pinot Noir	Pom	S04	4.02	8' x 6'	3,648	13	1999
10182	Pinot Noir	115	3309C	18.15	8' x 6'	16,468	111	1999
1019	Pinot Noir	667	1103P	0.88	8' x 5'	963	21	2007
1020	Pinot Noir	Pom	1103P	4.29	8' x 5'	4,667	48	2007
1021	Pinot Noir	Pom	1103P	3.03	8' x 5'	3,299	44	2007
Total				340.40				

Mike Bobbitt & Associates
 (805) 466-2920
 www.mikebobbitt.com
 14 Oct 2019

Source: USDA, U

Disclaimer: The information herein was compiled from multiple publicly available sources, is considered reliable and the most current available; it is, however, provided without warranty, either express or implied. No liability is assumed either directly or indirectly. Contact a licensed Land Surveyor for any questions regarding legal property boundaries